



# WMF COFFEE MACHINES

## Base Information

WMF Under Machine Cooler presto! & 2000S 9469



### WMF Under Machine Cooler

#### Application

Milk Cooler for models presto! and 2000S mounted below the machine.

#### Capacity

9.5 Litres of Milk

This universal milk cooler is mounted below the machine and comes with an automatic temperature control from 2° - 6°C which keeps the milk at the optimal temperature. The removable milk tank with approximately 9.5 litres capacity is prepared for Plug & Clean operation and is dishwasher-proof. The cooler got a on/off switch and a temperature control button.

#### TECHNICAL DATA

Type:	03 9469 1001 1 / N / PE, 50/60Hz, 230V, 0.05 kW, 16A fuse
Capacity:	Removable milk container approx. 9,5 L
Type of protection:	IP20
Protection class:	Class I
Perceptible heat emission:	0.04 kWh/h in maximum mode
Energy consumption:	0.015 kWh/24h
Cont. sound pressure (Lpa):	< 43 dB (A)
Climate class:	N
Refrigerant:	R 134a
Option:	
Miscellaneous:	The cooler can only be installed in combination with a coffee machine with integrated grounds container and, in addition, only with coffee machine type 2000 S or presto. The cooler is fitted with automatic temperature control and separate mains switch. Connecting cable 1.4m
Ambient Temperature:	+ 5°C bis + 35°C
Empty weight:	22.5 kg

WMF AG Coffee Machines International 73312 Geislingen/Steige, Germany

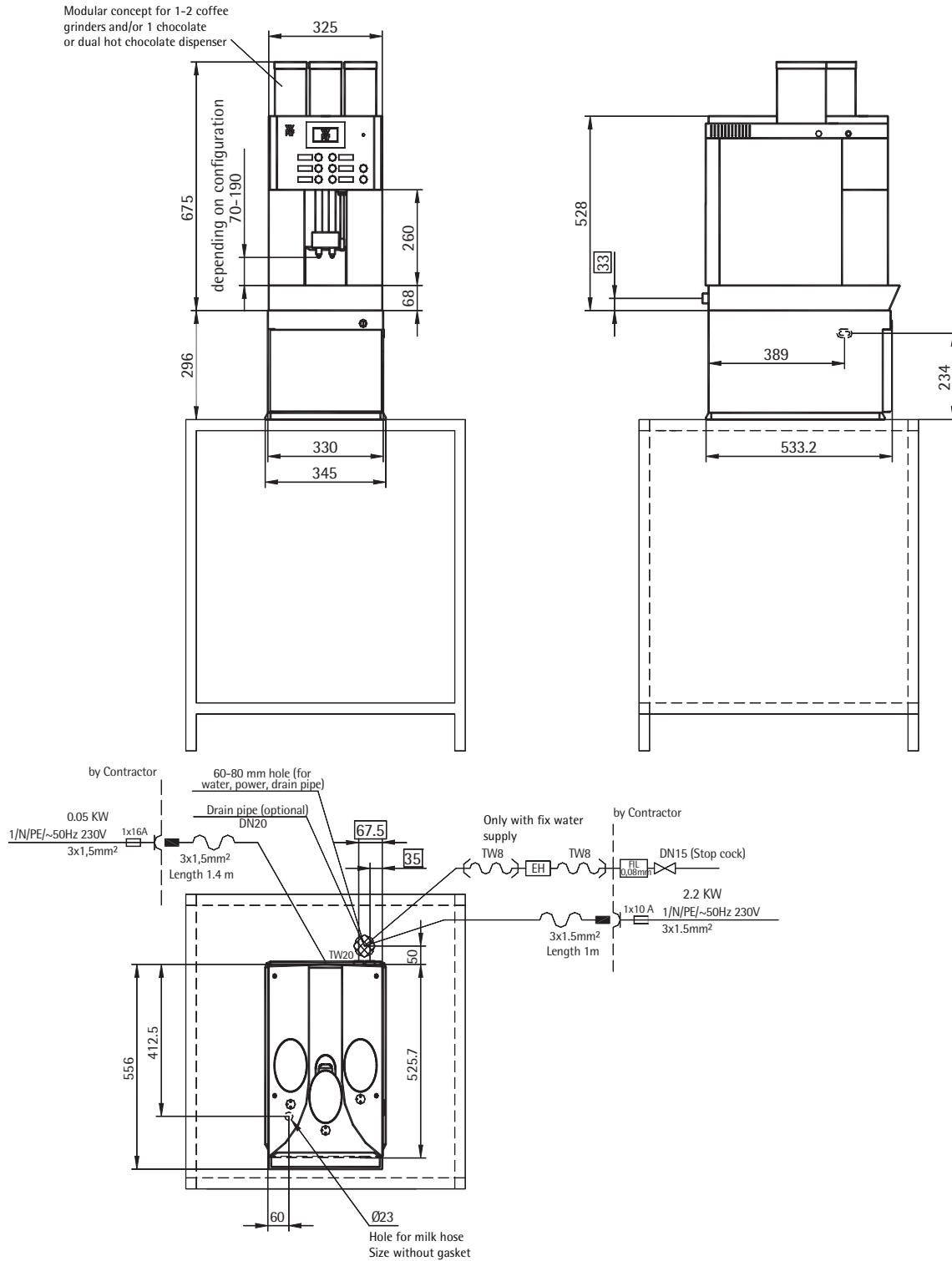
Phone +41 7331 258482 Fax +41 7331 258792, Mail: [professional@wmf.com](mailto:professional@wmf.com), Web: <http://www.wmf.com>  
Service Agent: RICMAS International Pte. Ltd. 25 International Business Park, German Centre #01-07/10, Singapore 609916  
Phone: +65 65628853, Fax: +65 65628854, Mail: [wmf@ricmas.com](mailto:wmf@ricmas.com), Web: <http://www.ricmas.com>



# WMF COFFEE MACHINES

## Planing Information

### WMF under Machine Cooler for presto! & 2000S Type 9469



WMF AG Coffee Machines International 73312 Geislingen/Steige, Germany

Phone +41 7331 258482 Fax +41 7331 258792, Mail: [professional@wmf.com](mailto:professional@wmf.com), Web: <http://www.wmf.com>

Service Agent: RICMAS International Pte. Ltd. 25 International Business Park, German Centre #01-07/10, Singapore 609916

Phone: +65 65628853, Fax: +65 65628854, Mail: [wmf@ricmas.com](mailto:wmf@ricmas.com), Web: <http://www.ricmas.com>