



WMF COFFEE MACHINES

Base Information

WMF prestolino! Type 1300



presto!

WMF presto! Type 1400

Application

Espresso, Milky Coffee and Hot Chocolate
Steam and Tea Water

Capacity

For Outlets up to 100 Cups/Day

Service Period

Approximately 8,000 brewings

The WMF Presto is the latest milestone in a tradition of coffee machine production dating back to 1927. The experience acquired over the years, particularly in the demanding world of professional catering, has resulted in a machine that stands comparison with any in the world in terms of quality, finish, innovation and design.

And it has those typically German qualities of good workmanship, reliability and especially hygiene, something that will be appreciated when it comes to the automatic cleaning programmes, if not before. Truly a genuine Made in Germany product, but if we may say so, "for the whole world".

TECHNICAL DATA

Standard Models		1400.0021	1400.0006
Hourly Output	Espresso	100 Cups/h	100 Cups/h
	Café Crème	90 Cups/h	90 Cups/h
	Cappuccino	N.A.	90 Cups/h
	Choc (optional)	80 Cups/h	80 Cups/h
Product Containers	Coffee Bean Hopper	(1 optional 2) 500 g	
	Choc Powder (optional)	500g (optional Milk Powder)	
Dimension	Height x Width x Depth	668 x 323 x 555 mm	
	Weight	~ 35 kg	
	Connections	Power Supply	1P/N/E 230V 50/60Hz / 2.2 kW
Options	Water Supply	1/2" (minimum 1.5 bar) / Tank 4.0 L	
	Drainage	25 mm	
Options	Steam / Frothier head	NO	YES
	Built in milk cooler	NO	YES
	Mobile Station	YES	YES
	Cup Rack	YES	YES
	Cup Et Cool	YES	YES

WMF AG Coffee Machines International 73312 Geislingen/Steige, Germany

Phone +41 7331 258482 Fax +41 7331 258792, Mail: professional@wmf.com, Web: <http://www.wmf.com>

Service Agent: RICMAS International Pte. Ltd. 25 International Business Park, German Centre #01-07/10, Singapore 609916

Phone: +65 65628853, Fax: +65 65628854, Mail: wmf@ricmas.com, Web: <http://www.ricmas.com>

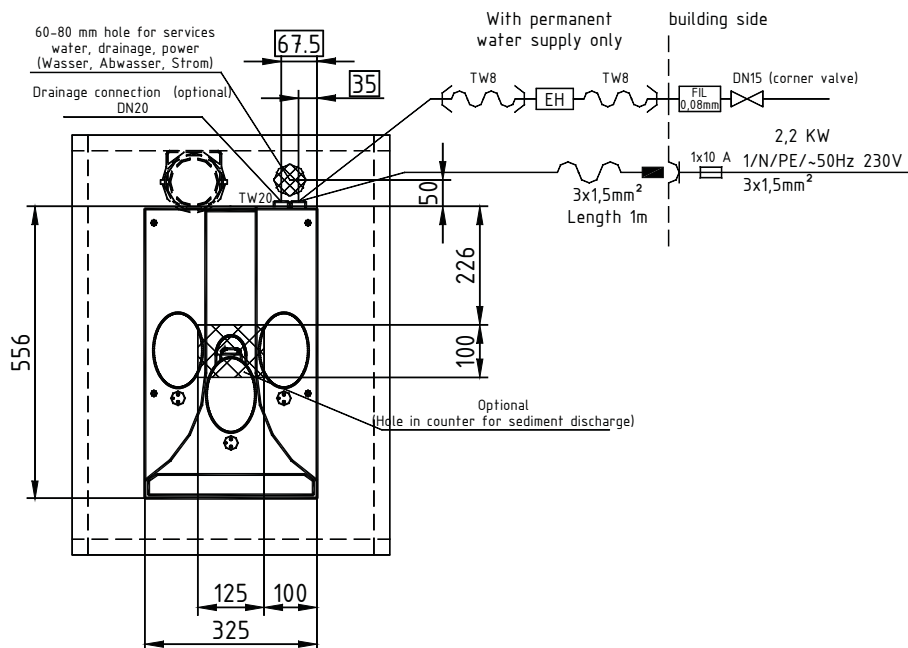
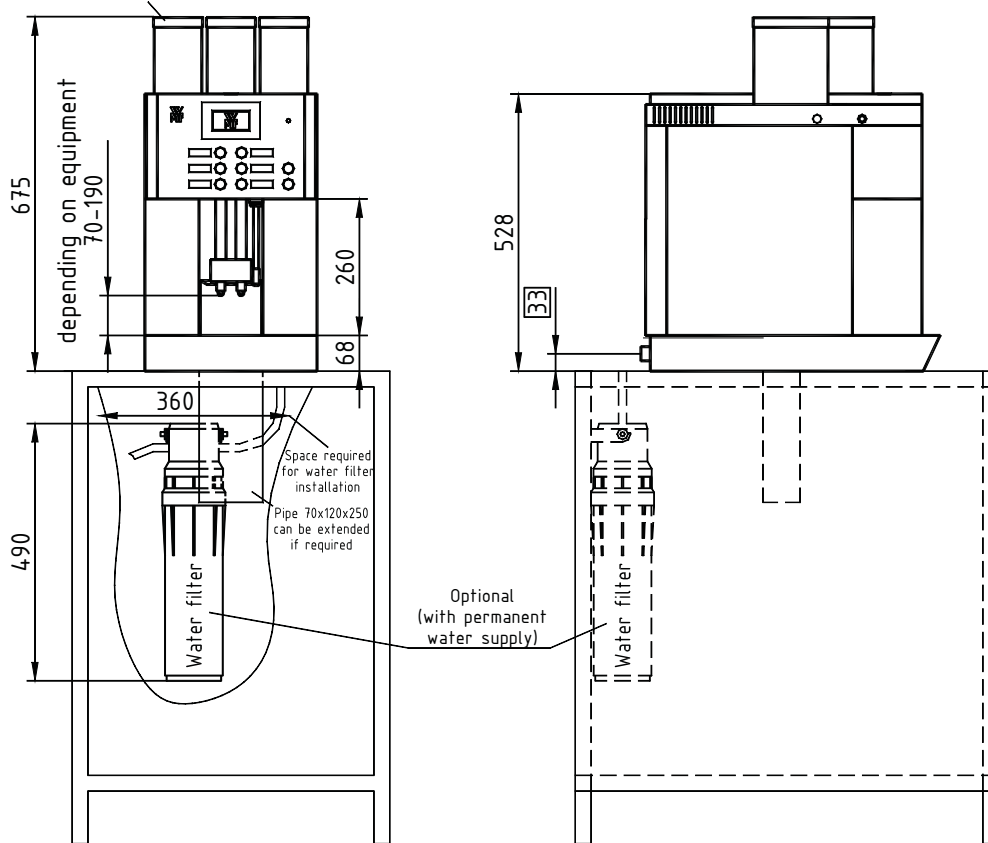


WMF COFFEE MACHINES

Planing Information

WMF presto! Type 1400

Modular concept for 1-2 coffee grinders
and/or 1 chocolate or milk powder dispenser





WMF COFFEE MACHINES

Data Sheet

WMF presto! Type 1400

Brewing process:	Speciality coffees and drinking chocolate with and without milk or milk powder topping Drinking chocolate made of chocolate powder, hot water and addition of milk.
Daily output:	max. 100 cups of speciality coffees with and without added milk or milk foam, 10 L hot water total output per day
Option:	"Aquaflex" switchable water connection types for tank or fixed water connection operation, steam dispenser, integrated thermoelectric milk cooler, indirect lighting in various colours, with fixed water connection water preparation filter (dimensions 126 mm Ø x 490 mm height), drainage connection DN 19,
Option:	Tank filter (33.2332.5000) for WMF Presto with water tank. For optimising water quality and reduction of calcification
Accessories:	multitool, cleaning brush, basic equipment decalcifier, cleaning tablets, milk cleaner
Degree of protection:	IPX0
Protection class:	Protection class I
Perceptible heat emission:	0.11 kWh/h in standby mode
Perceptible heat emission:	2.11 kWh/h in maximum mode
Cont. sound level (Lpa)	< 70 dB (A)
Water connection:	DN 15, (3/8") e.g. corner valve
Flow pressure:	with fixed water connection at least 0.2 MPa (2.0 bar), at 2 L min.
Miscellaneous:	coffee machine with dry residue discharge into an integrated drawer or optional with sediment discharge into a building-side container
Drain:	drip trough without drain. Optional drain DN 19, gradient at least 2%
Empty weight:	ca. 35-40 kg